

THE

GEM

EDITION # 1

THE GROUNDWATER ENGINEER MAGAZINE

2022/23 RATECARD AND MEDIA KIT

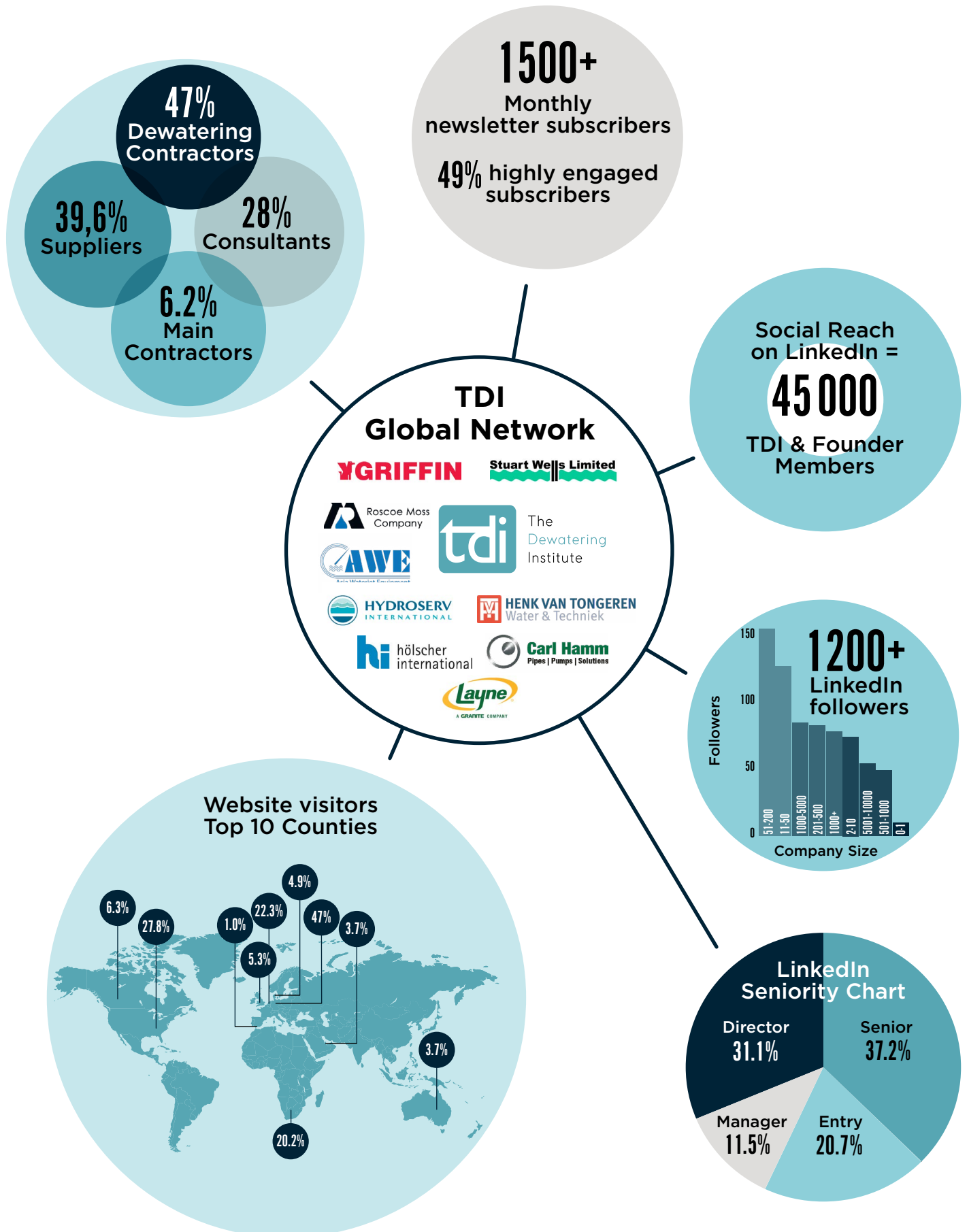
Bringing together the
global Dewatering and
Groundwater Control
industry.

An initiative by



The
Dewatering
Institute dewateringinst.com

The GEM is a new initiative launched to promote the ever growing global groundwater control and dewatering industry. An industry wide trade magazine that covers all the latest news, projects, case studies and equipment, providing an opportunity to promote your organisation to our ever growing network.



Rate Card

Editorial Package Deals

Double Page Spread Feature. Choose from News Item, Interview, Case Study or Spotlight.

+
Choose from half a page advert, or quarter page advert.

* Non-members content to be provided and will be subject to editing by the TDI team

**TDI members: content and features selected from existing TDI website content



TDI Members: Double page spread + half page advert \$750



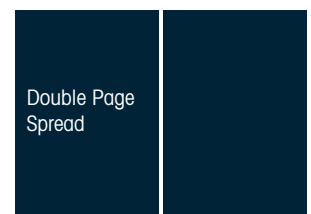
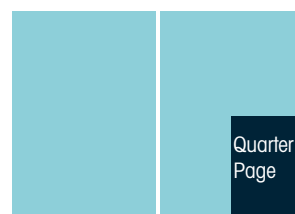
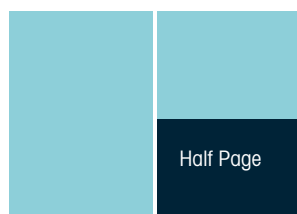
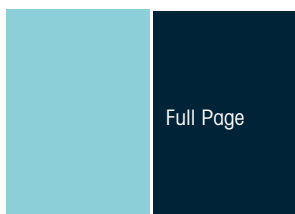
TDI Members: Double page spread + quarter page advert \$750



Advertising Rates

	TDI Members	Non-members
• Front page – outer front cover (Exclusive to members)	\$1800	-
• Front page – inside front cover	\$1500	\$1950
• Back page – outside back cover	\$1500	\$1950
• Back page – inside back cover	\$1500	\$1950
• One page advert	\$650	\$950
• Half page advert	\$450	\$650
• Quarter page advert	\$250	\$450

Visual Guide



Magazine size:

297mm x 210mm, full colour throughout, secure bound /square backed

Full page:

Trim size: 297mm (h) x 210mm (w)
Page type area: 277 mm (h) x 190mm (w)
Bleed: 5 mm – all round

Half page horizontal:

Trim size: 148 mm (h) x 210 mm (w)
Page type area: 128 mm (h) x 190 mm (w)
Bleed: 5 mm – all round

Quarter page:

Trim size: 143 mm (h) x 100 mm (w)
Page type area: 123 mm (h) x 80 mm (w)
No bleed required

DPS:

Trim Area: 297mm (h) x 420mm (w)
Type Area: 277mm (h) x 400mm (w)
Bleed Area: 5mm all around
Gutter: Please ensure 10mm is left on either side

Artwork Requirements

All artwork to be provided to in the specifications provided. In case you are unable to provide artwork, this service can be provided at an additional charge.

PDF (with crop marks); CMYK 300 dpi, high resolution. Please ensure 'black' text is made up of 100% K (black) and NOT four colours. Black set to overprint.

No Pantone or RGB colours accepted on artwork. Please include bleed with trim marks where applicable. All advertising material to be sent via email or Dropbox or wetransfer to production@dewateringinst.com

No cancellations will be accepted after the booking deadline. Terms and conditions apply.

BEST PRACTICES
NETWORKING
KNOWLEDGE SHARING
EDUCATION



Collaboration with global leaders



About The Dewatering Institute



The Dewatering Institute (TDI) was founded as a way for stakeholders in the industry to come together and develop the dewatering industry across the entire project life cycle, from concept designs right through to successful project completion.

TDI's purpose is to serve all its members and collaborators including project owners, government bodies, engineers, contractors, manufacturers and suppliers. As the institute develops, its aim is to provide a platform for members that will promote best practices in dewatering.

The Dewatering Institute

In order to book your spot, find out more about advertising in The GEM or to become a TDI member, please get in touch:

Contact Details: Riette Laas

E-mail: Riette@dewateringinst.com

Telephone: +27 71 177 3779

